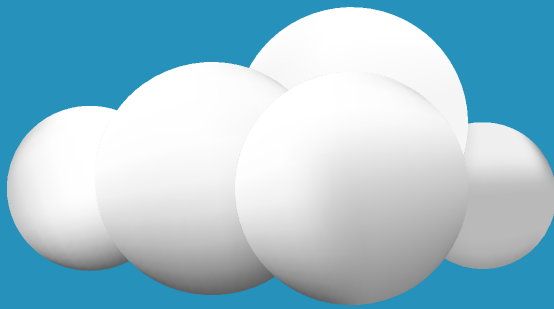
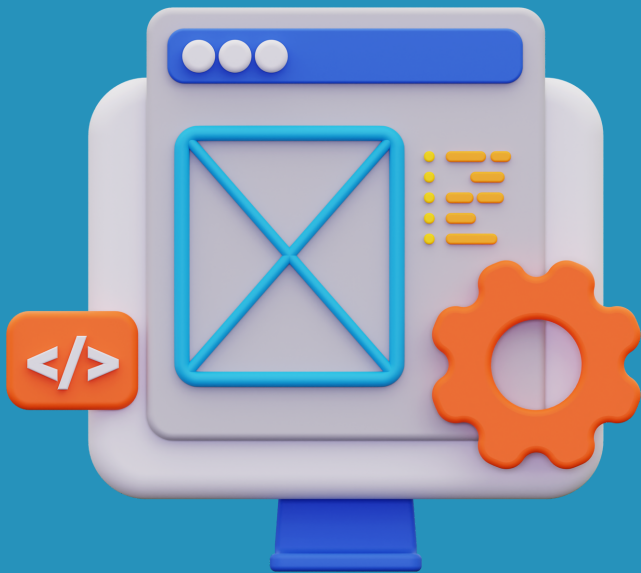
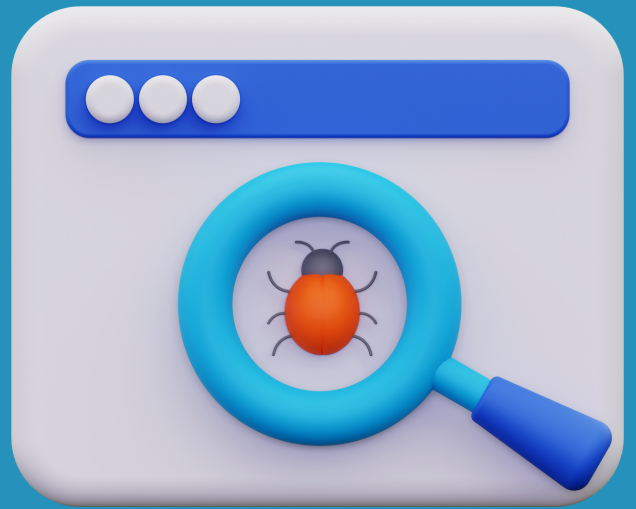


ITEMS WE CAN TACKLE IN JUST 2 HOURS



Check For Malware

We can check your devices for malware and offer our recommendation on remediating them.

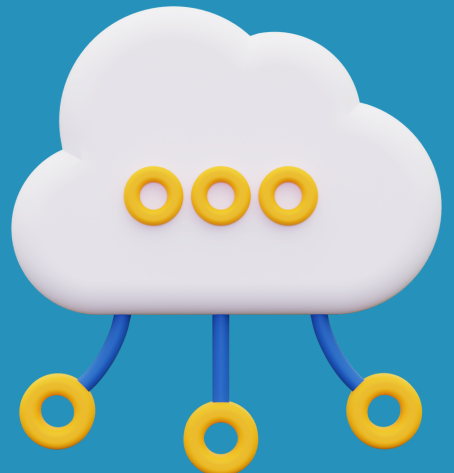


Check Your Software

We can take a look at whether your software has the latest updates and perform those updates if not.

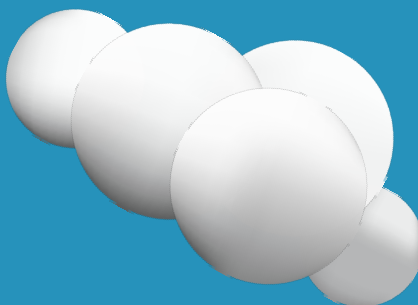
Check Your Network

We can take a look at whether you're getting the most out of your office network or whether there is something that can be improved to get you faster speeds or a more reliable connection.



Check Your Server

We can see if your server is still performing optimally or is at risk of failing and offer a recommendation on what you should do.



Check for Viruses

We can also look for viruses that make be lurking on your office devices and remove them.

