



VALLEY
TECHLOGIC

TECH PLAN GUIDE



Book a 10 minute discovery call at valleytechlogic.com/calendar

TechVault Backup Solution

The best data backup plans are implemented in layers

Plan Includes



**VALLEY
TECHLOGIC**

www.valleytechlogic.com

Ph: 209-357-3121

111 Business Parkway,
Awater, CA 95301

Onsite Backup

- Stored Onsite
- Backed up every 15 minutes
- Regularly Backed Up to the Cloud
- Immediate Access to Data
- Fastest recovery/restore time



Cloud Stored Backup

- Stored Securely in the Cloud
- In the event of server failure, you're covered
- Still very accessible
- No maintenance, we handle this backup remotely
- Resilient to natural disasters (fires, floods, etc).



Archival Data Backup

- Immutable/ Write once read many (WORM) - Data Cannot be Changed
- Duplicate Data Copy Unconnected to other devices
- If a cyber security event happens, this copy of your data will be safe
- Stored on a third party solution
- Third Layer of Redundancy



Additional Benefits

- 256 Bit Military Grade Encryption
- Compliancy Approved Backup Plan
- Physical and Virtual Backups
- Recover directly to your device
- Unique Data Key
- Unlimited Storage
- Three Levels of Redundancy
- Point in Time Backups





CYBER SECURITY SERVICES

SIX LAYERS OF
SECURITY TO PROTECT
YOUR BUSINESS

OfficeGuard

48% of malicious
email attachments
are Office files



Office 365 is ubiquitous in the world of business, and we think this means it needs its own specialized protection and backup package.

Next Generation End Point Protection

An end point is any device that's directly in your office, and because these are attached to the very network that powers your business, they need to be 100% secure.

82% of
manufacturers
have experienced a
phishing attack in
the past year



Dark Web Monitoring

The dark web is intimidating, but it doesn't have to be. With dark web monitoring you'll be notified immediately if any of your private information is on it.

The dark web
makes up 48% of
the internet



Advanced Threat Protection

59% of companies
consider ransomware
to be their biggest
threat



You want the best when it comes to your business and the invisible security measures that keep you safe. We do extensive research into all the security software we provide to our clients.

Security Awareness Training

90% of breaches
include a phishing
element.



Bad actors have a lot of tools to break into your system, our security awareness training covers all of them and will help keep you and your employees safe online.

TechVault Backup

Three layers of backups means three fail safe ways we're protecting your data. On site, in the cloud and archival backups are all included in this plan.

31% of PC users
have lost all of
their files due to
events beyond
their control





The 3 Types of Support We Offer

GOOD

TechCare Essentials

Our base plan, this plan covers 1 server and up to 20 computers.

This plan includes 4 support hours and access to 24/7 emergency support.

Pros -

- ✓ Lowest cost of entry of all 3 plans
- ✓ Access to 24/7 Support Available
- ✓ 4 Hours of Support Included Per Month
- ✓ Standard Cyber Security Package Included
- ✓ Flat Cost for Computer Replacements

Cons -

- ✗ Monthly bill may be unpredictable - will fluctuate based on usage
- ✗ Just 4 Hours of support allotted per month - hourly charge after that
- ✗ Project work is not covered at all.

BETTER

TechCare Remote

This mid-tier plan is for you if you don't foresee yourself needing much onsite support (and don't mind paying our VIP pricing when you do). Unlimited phone and email support for one low monthly cost means a more predictable IT bill.

Pros -

- ✓ Unlimited Phone and Email Support
- ✓ Access to a Higher Tier of Support
- ✓ More Predictable Billing Because Some Support Is Included
- ✓ Includes all the features of TechCare Essentials
- ✓ Security Risk Management Included

Cons -

- ✗ Still have to pay for Onsite Support which may lead to varying IT billing every month depending on usage.
- ✗ Project work is also not covered in this plan.

BEST

Managed IT Department

Our top plan covers everything the other two do as well as adding unlimited onsite and remote support and an advance cyber security package. It's like having a full service IT department for a fraction of the cost. Know your exactly what your IT budget is every month.

Pros -

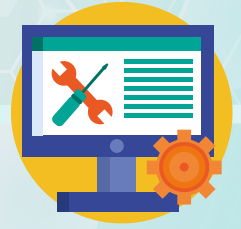
- ✓ As a Managed IT Department Customer you'll receive our Top Tier Support
- ✓ Unlimited Phone, Email and Onsite Support Included
- ✓ Advanced Cyber Security Package Included with features such as Dark Web Monitoring & Advanced Threat Protection
- ✓ Project work is completely covered on covered devices
- ✓ Also includes all the features of the other two packages

Cons -

- ✗ Monthly cost is higher than the other two but we think the features of this plan make it more than worth it.



The Central Valley's One Stop Shop For Technology



COMPUTERS & SERVERS

- Data Backups
- Cyber Security
- Onsite Support
- Remote Support
- All Inclusive Plans



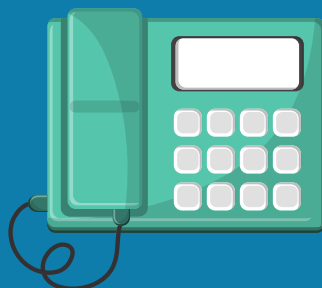
SETUP & INSTALLATION

- Cable Drops
- Networking Assistance
- Configuration Help
- Wiring
- Hardware Procurement



PHONES & VOIP

- Exclusive Service Plans
- Installation
- Adding New Extensions
- Handset Replacement
- SIP Configuration



SECURITY CAMERAS

- Installation
- Help with Purchasing
- Up to 4K Resolution
- Indoor/Outdoor Available
- Business Security System



www.valleytechlogic.com

111 Business Park Way, Atwater CA 95301 Ph: 209-357-3121